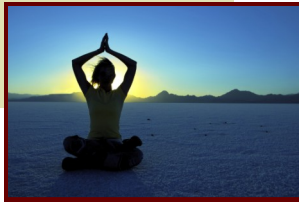


Come Join Our Skill Building Group!

Where You Can:

- Practice social and behavioral skills
- Enhance employability skills
- Increase your involvement within the community at large
- Create and maintain meaningful relationships



And Learn:

- Stress reduction practices
- Team building activities
- Acting and role playing exercises
- Scrapbook journaling and other creative projects
- Much more!

Locations

Northern:

William Paterson University,
Valley Road Campus
1600 Valley Road
Wayne, NJ 07470-2135

Southern:

135 Monmouth Street
Red Bank, NJ 07701

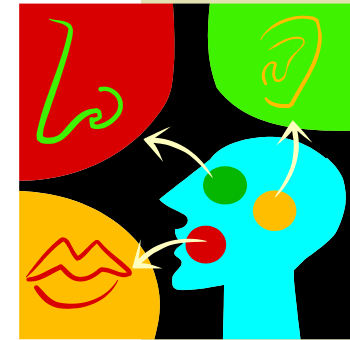
For information please contact :

Nancy O'Reilly,
Program Supervisor
Phone (845) 358-5700 ext. 147
Fax (973) 720-2737
nancy.o'reilly@yai.org

NJ National Institute for
People with Disabilities
of New Jersey

A Member of **YAI** Network

Support Group for Adults with Asperger's Syndrome



NJ National Institute for
People with Disabilities
of New Jersey

A Member of **YAI** Network

Program Information

National Institute for People with Disabilities of New Jersey is running a program for adults with Asperger's Syndrome. While there are support groups for children and the families of children with Asperger's Syndrome, presently there are few adult groups in New Jersey. Openings are available for NY and NJ residents.

Each group will serve a maximum of 12 participants along with a Group Leader and an Assistant. Group sessions are held 2 days per week, from 10am to 3pm.

Lunch is part of the program time. Staff is available to work with participants individually on an as needed basis.

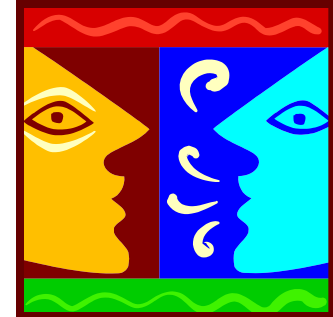
The program is experiential in



design. The participants learn through active participation, role-playing, acting sessions (real life scripts), audio and video taping, and team building exercises with lots of rehearsal and practice periods. The major emphasis is to enhance appropriate social and behavioral skills in order to make meaningful social connections, enhance employability, and if needed, explore additional educational or job training options. The curriculum has been developed from the published works of persons in the field as well as professionals with Asperger's.

Entry Qualifications

- Open to adults who have a clinical diagnosis of Asperger's Syndrome
- Participants may reside in New Jersey and New York



Individuals can be funded through DDD of NJ or privately, on a fee for service basis.

